

[Home \(/\)](#) > [Programs \(/programs/\)](#) > [Environmental Review \(/programs/environmental-review/\)](#) > Environmental Justice

# Environmental Justice

## Introduction

Environmental justice means ensuring that the environment and human health are protected fairly for all people regardless of race, color, national origin, or income. Executive Order 12898, "Federal Actions to Address Environmental Justice in Minority Populations and Low-income Populations" (2/94) requires certain federal agencies, including HUD, to consider how federally assisted projects may have disproportionately high and adverse human health or environmental effects on minority and low-income populations.

Environmental justice is an integral part of HUD's mission. The Department works with multiple stakeholders and other federal agencies in its efforts to assure environmental justice concerns are addressed.

## HUD Guidance

**Does the project create adverse environmental impacts?**

**If so, are these adverse environmental impacts disproportionately high for low-income and/or minority communities?**

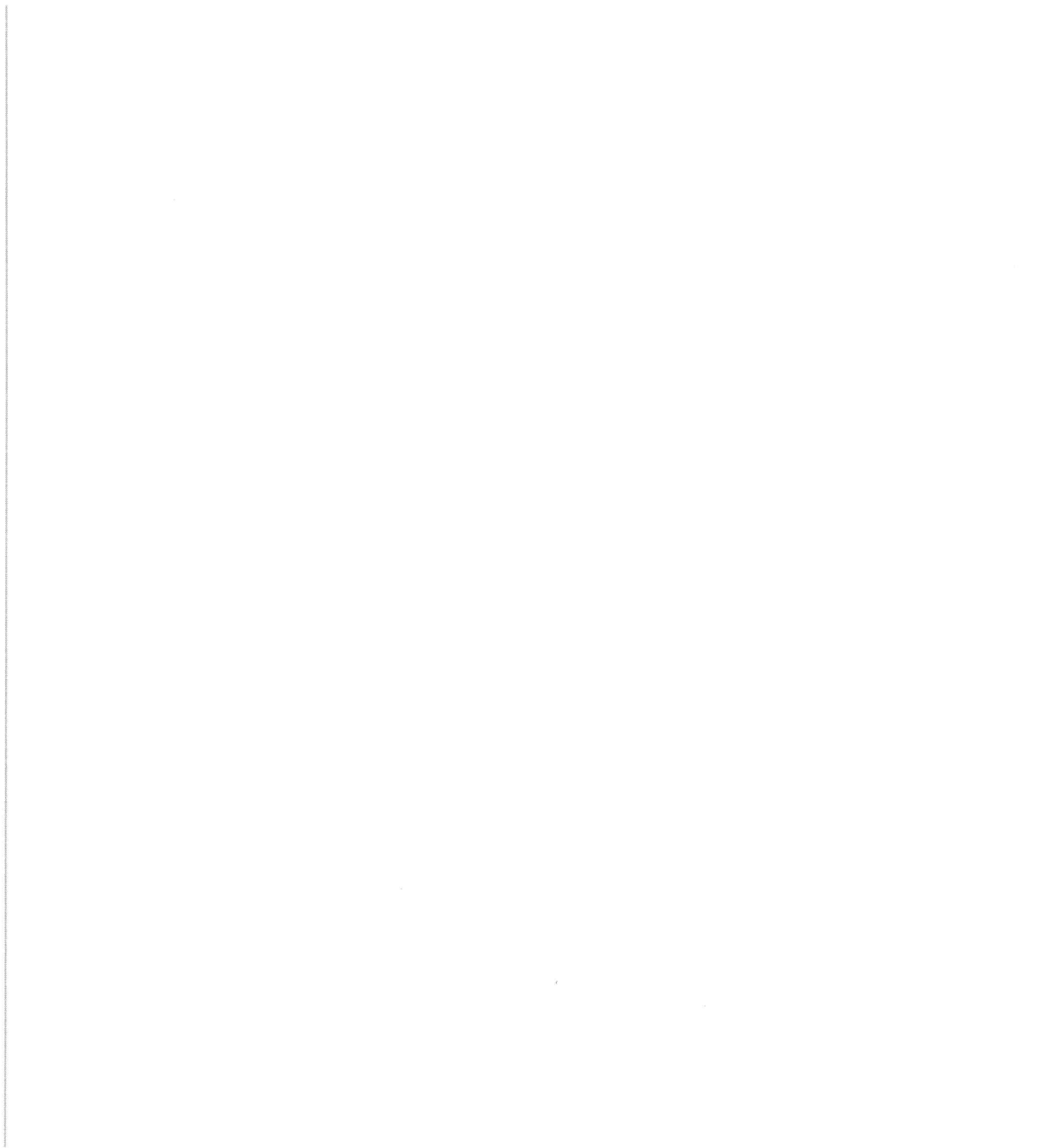
**Can the adverse impacts be mitigated?** Engage the affected community in meaningful participation about mitigating the impacts or move the project to another community.

## Compliance and Documentation

Review land use plans, census information and the U.S. EPA Environmental Justice webpage (EJ View). Consider local government sources such as the health department or school district that may be more current or focused on the neighborhood as their unit of analysis.

The environmental review record should contain **one** of the following:

- Evidence that the site or surrounding neighborhood does not suffer from adverse environmental



[Floodplain Management \(/environmental-review/floodplain-management\)](/environmental-review/floodplain-management)

[Historic Preservation \(/environmental-review/historic-preservation\)](/environmental-review/historic-preservation)

[Noise Abatement and Control \(/environmental-review/noise-abatement-and-control\)](/environmental-review/noise-abatement-and-control)

[Site Contamination \(/environmental-review/site-contamination\)](/environmental-review/site-contamination)

[Sole Source Aquifers \(/environmental-review/sole-source-aquifers\)](/environmental-review/sole-source-aquifers)

[Wetlands Protection \(/environmental-review/wetlands-protection\)](/environmental-review/wetlands-protection)

[Wild and Scenic Rivers \(/environmental-review/wild-and-scenic-rivers\)](/environmental-review/wild-and-scenic-rivers)

## Environmental Justice (CEST and EA)

General requirements	Legislation	Regulation
Determine if the project creates adverse environmental impacts upon a low-income or minority community. If it does, engage the community in meaningful participation about mitigating the impacts or move the project.	Executive Order 12898	
References		
<a href="https://www.hudexchange.info/environmental-review/environmental-justice">https://www.hudexchange.info/environmental-review/environmental-justice</a>		

**HUD strongly encourages starting the Environmental Justice analysis only after all other laws and authorities, including Environmental Assessment factors if necessary, have been completed.**

1. Were any adverse environmental impacts identified in any other compliance review portion of this project's total environmental review?

Yes → Continue to Question 2.

No → Based on the response, the review is in compliance with this section. Continue to the Worksheet Summary below.

2. Were these adverse environmental impacts disproportionately high for low-income and/or minority communities?

Yes

**Explain:**

→ Continue to Question 3. Provide any supporting documentation.

No

**Explain:**

→ Continue to the Worksheet Summary and provide any supporting documentation.

3. All adverse impacts should be mitigated. Explain in detail the proposed measures that must be implemented to mitigate for the impact or effect, including the timeline for implementation.

Mitigation as follows will be implemented:

→ Continue to Question 4.

No mitigation is necessary.

**Explain why mitigation will not be made here:**

→ Continue to Question 4.

4. Describe how the affected low-income or minority community was engaged or meaningfully involved in the decision on what mitigation actions, if any, will be taken.

→ Continue to the Worksheet Summary and provide any supporting documentation.

## **Worksheet Summary**

### **Compliance Determination**

Provide a clear description of your determination and a synopsis of the information that it was based on, such as:

- Map panel numbers and dates
- Names of all consulted parties and relevant consultation dates
- Names of plans or reports and relevant page numbers
- Any additional requirements specific to your region

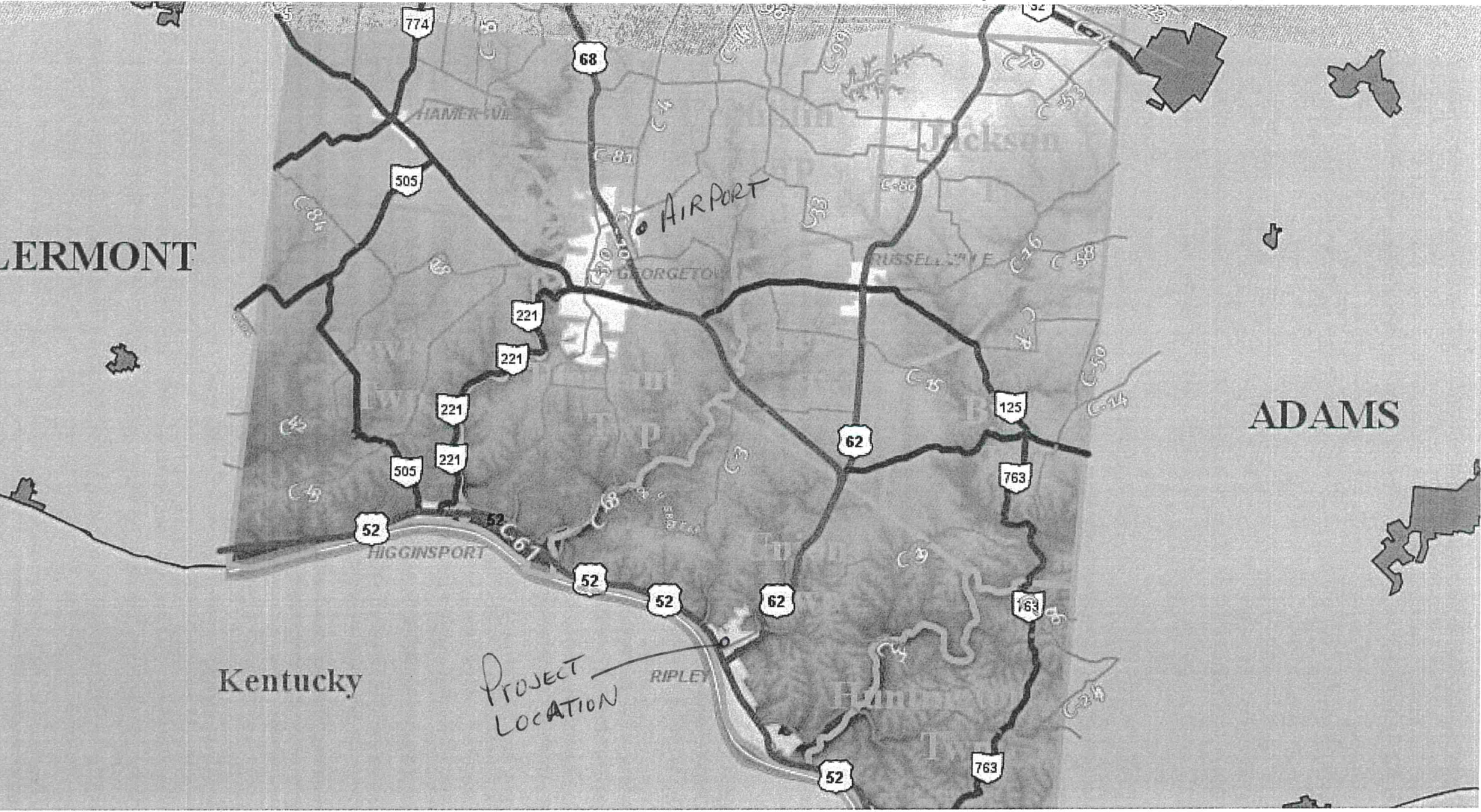
The project consist of building renovations that will rehab vacant unused buildings in the Ripley Downtown area and put them into use again. Both buildings fall under the heading of standard retail (bar, recreational equipment rental, retail store, etc. Neither has a negative impact on LMI individuals and likely will have a positive affect due to additional shopping and services options close at hand.

**Are formal compliance steps or mitigation required?**

Yes

No





LERMONT

Kentucky

PROJECT  
LOCATION

RIPLEY

HIGGINSPORT

GEORGETOWN

Jackson

AIRPORT

ADAMS

774

68

505

221

221

221

505

52

52

52

62

62

125

763

763

763

52





390736840000

410745160000

390749880000

390750640000

390737

39075072010

390

Ohio RIVER

PROJECT LOCATION

MAIN ST

PYLEY RD

62

CRACKERS

THE OHIO RIVER

I-55

C-62

C-62

THE OHIO RIVER



# Brown County Airport

Camp Run Rd., Georgetown



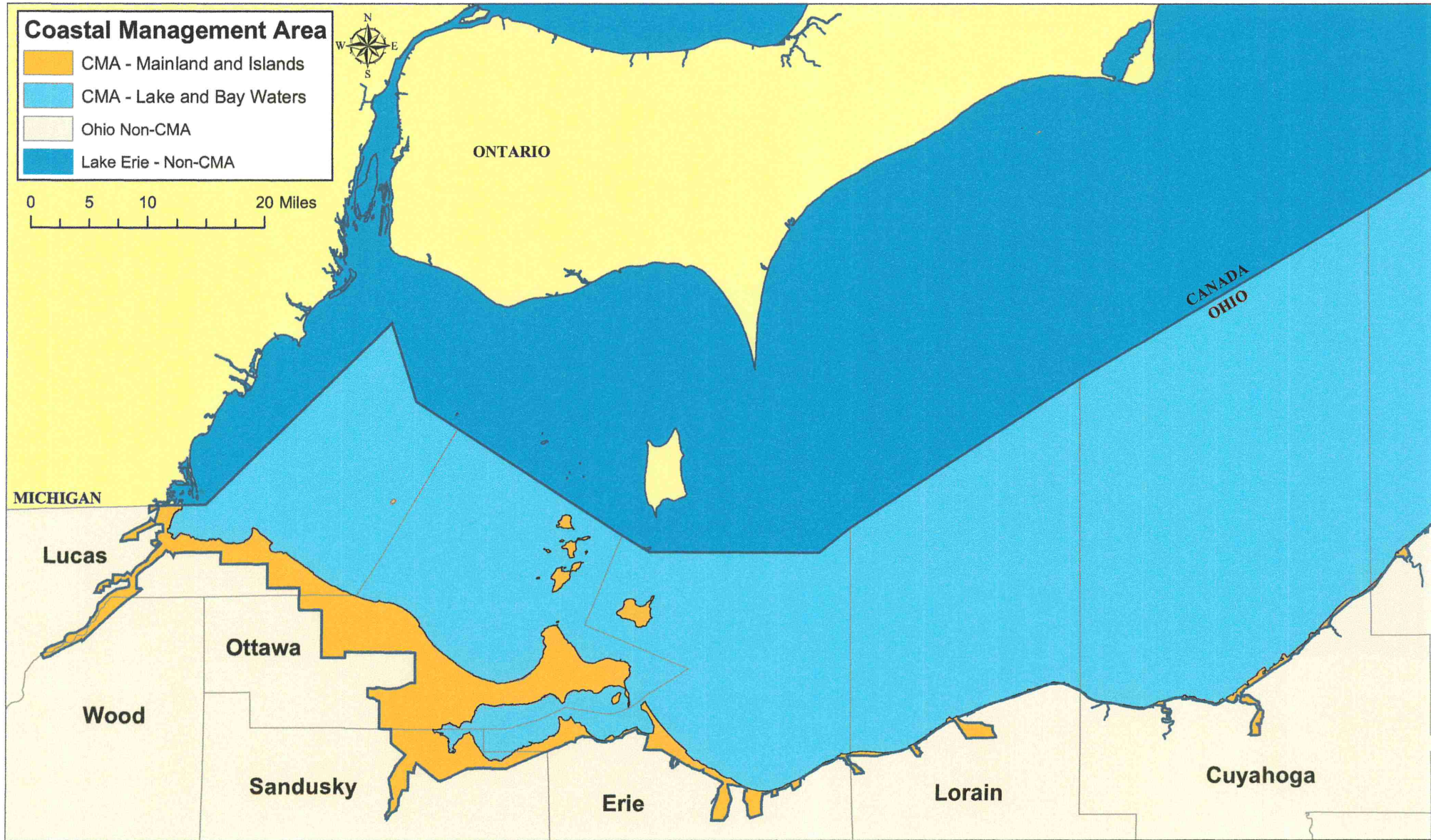
300 m  
1100 ft

Jan/15/2021  
Scale 1:17194

The materials available at this web site are for informational purposes only and do not constitute a legal document.



# Ohio Coastal Management Area



Ohio Coastal Atlas - Map Library 10/2007

Ohio Department of Natural Resources  
Office of Coastal Management  
105 West Shoreline Drive  
Sandusky, Ohio 44870





# FEMA Flood Map Service Center: Search By Address

Navigation

Search

Languages

MSC Home (/portal/)

MSC Search by Address (/portal/search)

MSC Search All Products (/portal/advanceSearch)

MSC Products and Tools (/portal/resources/productsandtools)

Hazus (/portal/resources/hazus)

LOMC Batch Files (/portal/resources/lomc)

Product Availability (/portal/productAvailability)

MSC Frequently Asked Questions (FAQs) (/portal/resources/faq)

MSC Email Subscriptions (/portal/subscriptionHome)

Contact MSC Help (/portal/resources/contact)

Enter an address, place, or coordinates: ?

2 main street, ripley, ohio

Search

Whether you are in a high risk zone or not, you may need [flood insurance](https://www.fema.gov/national-flood-insurance-program) because most homeowners insurance doesn't cover flood damage. If you live in an area with low or moderate flood risk, you are 5 times more likely to experience flood than a fire in your home over the next 30 years. For many, a National Flood Insurance Program's flood insurance policy could cost less than \$400 per year. Call your insurance agent today and protect what you've built.

Learn more about [steps you can take](https://www.fema.gov/what-mitigation) to reduce flood risk damage.

## Search Results—Products for RIPLEY, VILLAGE OF

Show ALL Products » (<https://msc.fema.gov/portal/availabilitySearch?addcommunity=390036&communityName=RIPLEY, VILLAGE OF#searchresultsanchor>)

The flood map for the selected area is number **39015C0401D**, effective on **09/29/2010**

### DYNAMIC MAP



PRINT MAP / FIRMette

### MAP IMAGE



([https://msc.fema.gov/portal/downloadProduct?](https://msc.fema.gov/portal/downloadProduct?filepath=/39/P/Firm/39015C0401D.png&productTypeID=FINAL_PRODUCT&productSubTypeID=FIRM_PANEL&productID=39015C0401D)

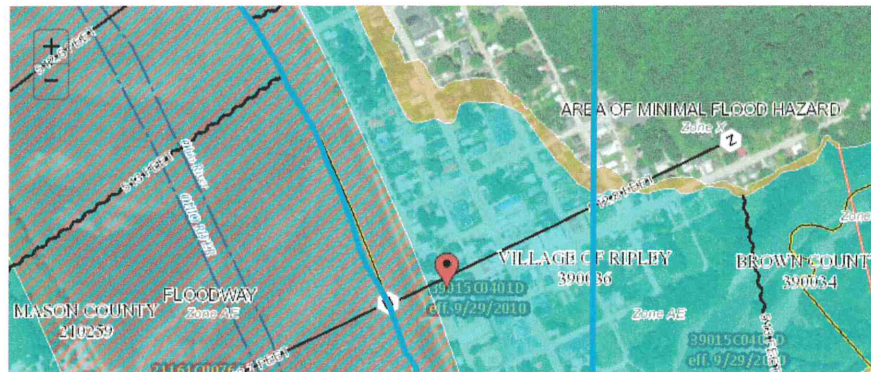
[filepath=/39/P/Firm/39015C0401D.png&productTypeID=FINAL\\_PRODUCT&productSubTypeID=FIRM\\_PANEL&productID=39015C0401D](https://msc.fema.gov/portal/downloadProduct?filepath=/39/P/Firm/39015C0401D.png&productTypeID=FINAL_PRODUCT&productSubTypeID=FIRM_PANEL&productID=39015C0401D))

### Changes to this FIRM ?

- Revisions (0)
- Amendments (0)
- Revalidations (0)

You can choose a new flood map or move the location pin by selecting a different location on the locator map below or by entering a new location in the search field above. It may take a minute or more during peak hours to generate a dynamic FIRMette. If you are a person with a disability, are blind, or have low vision, and need assistance, please contact a map specialist (<https://msc.fema.gov/portal/resources/contact>).

Go To NFHL Viewer » (<https://hazards-fema.maps.arcgis.com/apps/webappviewer/index.html?id=8b0adb51996444d4879338b5529aa9cd&extent=-83.85480194531706,38.7411059944>)





<p><b>PIN</b></p> <ul style="list-style-type: none"> <li> Approximate location based on user input and does not represent an authoritative property location</li> </ul> <p><b>MAP PANELS</b></p> <ul style="list-style-type: none"> <li><input type="checkbox"/> Selected FloodMap Boundary</li> <li><input type="checkbox"/> Digital Data Available</li> <li><input type="checkbox"/> No Digital Data Available</li> <li><input type="checkbox"/> Unmapped</li> </ul> <p><b>OTHER AREAS</b></p> <ul style="list-style-type: none"> <li> Area of Minimal Flood Hazard Zone X</li> <li> Effective LOAHs</li> <li> Area of Undetermined Flood Hazard Zone D</li> <li> Other/Use Protected Area</li> <li> Coastal Barrier Resource System Area</li> </ul>	<p><b>SPECIAL FLOOD HAZARD AREAS</b></p> <ul style="list-style-type: none"> <li> Without Base Flood Elevation (BFE) Zone A, X, AE, AH</li> <li> With BFE or Depth</li> <li> Regulatory Floodway Zone AE, AO, AH, VE, AR</li> </ul> <p><b>OTHER AREAS OF FLOOD HAZARD</b></p> <ul style="list-style-type: none"> <li> 0.2% Annual Chance Flood Hazard, Areas of 1% annual chance flood with average depth less than one foot or with drainage areas of less than one square mile Zone X</li> <li> Future Conditions 1% Annual Chance Flood Hazard Zone X</li> <li> Area with Reduced Flood Risk due to Levee. See Notes. Zone X</li> <li> Area with Flood Risk due to Levee Zone D</li> </ul>	<p><b>OTHER FEATURES</b></p> <ul style="list-style-type: none"> <li> Cross Sections with 1% Annual Chance Water Surface Elevation</li> <li> Coastal Transect</li> <li> Base Flood Elevation Line (BFE)</li> <li> Limit of Study</li> <li> Jurisdiction Boundary</li> <li> Coastal Transect Baseline</li> <li> Profile Baseline</li> <li> Hydrographic Feature</li> </ul> <p><b>GENERAL STRUCTURES</b></p> <ul style="list-style-type: none"> <li> Channel, Culvert, or Storm Sewer</li> <li> Levee, Dike, or Floodwall</li> </ul>
--------------------------------------------------------------------------------------------------------------------------------------------------------------------------------------------------------------------------------------------------------------------------------------------------------------------------------------------------------------------------------------------------------------------------------------------------------------------------------------------------------------------------------------------------------------------------------------------------------------------------------------------------------------------------------------------------------------------------------------------------------	----------------------------------------------------------------------------------------------------------------------------------------------------------------------------------------------------------------------------------------------------------------------------------------------------------------------------------------------------------------------------------------------------------------------------------------------------------------------------------------------------------------------------------------------------------------------------------------------------------------------------------------------------------------------------------------------	-----------------------------------------------------------------------------------------------------------------------------------------------------------------------------------------------------------------------------------------------------------------------------------------------------------------------------------------------------------------------------------------------------------------------------------------------------------------------------------------------------------------------------------

Share This Page.

[Home](http://www.fema.gov/) (<http://www.fema.gov/>)
 [Download Plug-ins](http://www.fema.gov/download-plug-ins) (<http://www.fema.gov/download-plug-ins>)
 [About Us](http://www.fema.gov/about-agency) (<http://www.fema.gov/about-agency>)
 [Privacy Policy](http://www.fema.gov/privacy-policy) (<http://www.fema.gov/privacy-policy>)
 [FOIA](http://www.fema.gov/foia) (<http://www.fema.gov/foia>)
 [Office of the Inspector General](http://www.oig.dhs.gov/) (<http://www.oig.dhs.gov/>)
 [Strategic Plan](http://www.fema.gov/fema-strategic-plan) (<http://www.fema.gov/fema-strategic-plan>)
 [Whitehouse.gov](http://www.whitehouse.gov/) (<http://www.whitehouse.gov/>)
 [DHS.gov](http://www.dhs.gov/) (<http://www.dhs.gov/>)
 [Ready.gov](http://www.ready.gov/) (<http://www.ready.gov/>)
 [USA.gov](http://www.usa.gov/) (<http://www.usa.gov/>)
 [DisasterAssistance.gov](http://www.disasterassistance.gov/) (<http://www.disasterassistance.gov/>)



(<https://www.oig.dhs.gov/hotline>)

Official website of the Department of Homeland Security